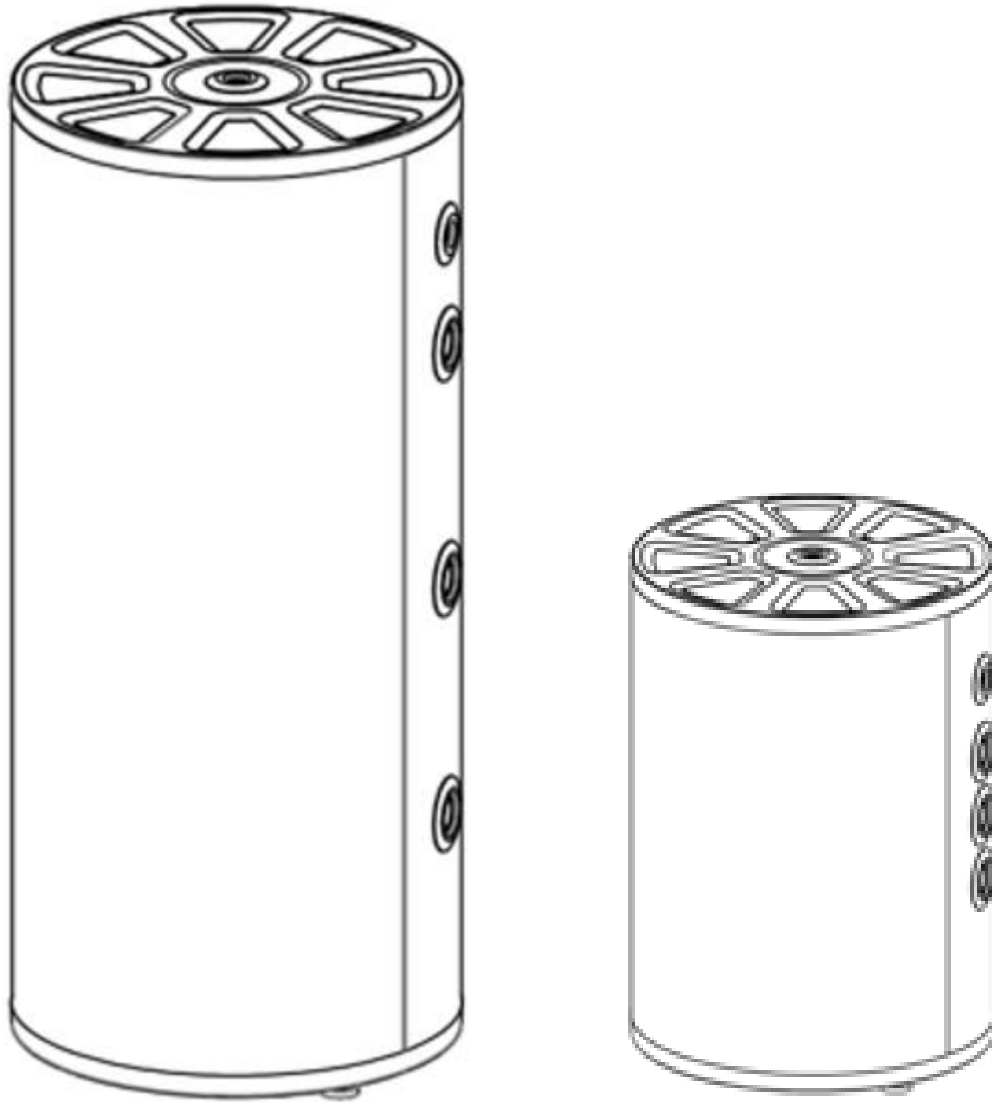


INSTALLATION AND OPERATING INSTRUCTIONS

Buffer tank



- BR-005
- BR-01
- BR-02
- BR-025
- BR-05

Table of contents

CONDITIONS FOR SAFE AND RELIABLE OPERATION.....	4
DESTINY	5
Buffer dimensions 50 BR-005	6
Construction buffer 100 BR-01.....	8
Buffer dimensions 100 BR-01	9
Buffer construction 200 BR-02	10
Buffer dimensions 200 BR-02	11
Construction of the BR-025 buffer	12
Buffer dimensions BR-025	13
Construction of the BR-05 buffer	14
Buffer dimensions BR-05	15
CONNECT	16
RUN.....	16
TANK EMPTYING.....	16
OPERATION.....	17
TECHNICAL SPECIFICATIONS.....	17
WHAT TO DO IN CASE OF DAMAGE OR IRREGULARITIES	18
RECYCLING AND DISPOSAL OF WASTE	18
DECOMMISSIONING	18

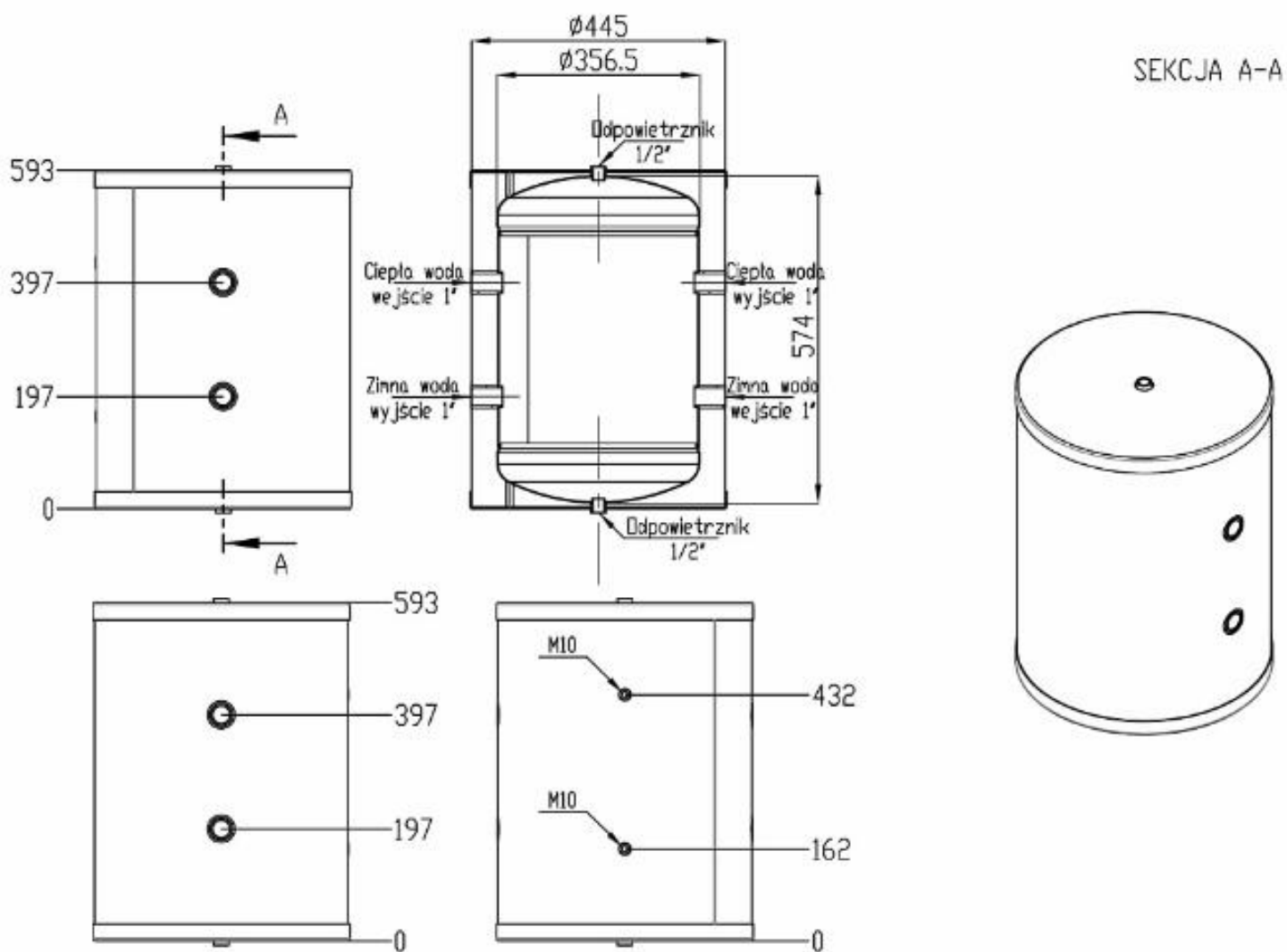
CONDITIONS FOR SAFE AND RELIABLE OPERATION

1. Compliance with this installation and operation manual will enable proper installation and operation of the device, ensuring a long service life and reliable operation.
2. It is not allowed to install the buffer tank not in accordance with the instructions, it threatens with failure, malfunction of the system and voids the warranty.
3. When working with the device, health and safety rules and other regulations in force in a given country should be observed.
4. The device must not be installed in rooms where the ambient temperature may fall below 0°C.
5. Installation and commissioning should be carried out by a specialist service facility.
6. The buffer tank shall be mounted vertically only.
7. The tank is a pressure device, the maximum working pressure of the tank is 0.4 MPa.
8. Heating water should meet the requirements of PN-C-04607:1991.
9. The maximum temperature of 95°C must not be exceeded in the operation of the collection tank.

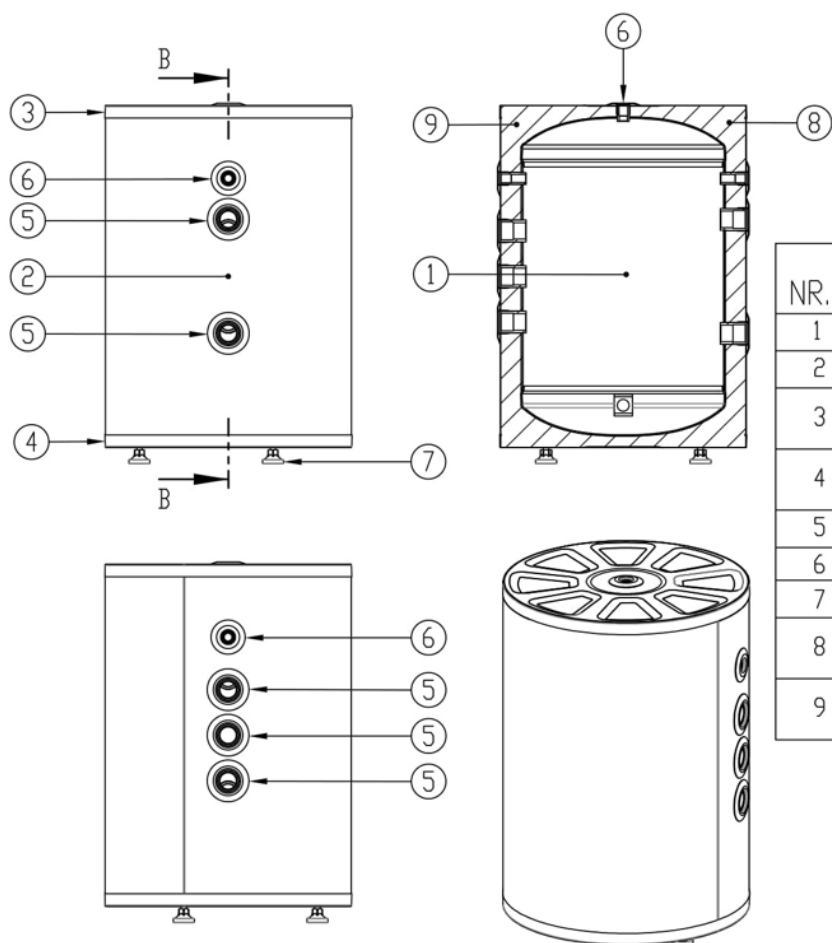
Buffer tanks BR are devices designed for storing heating water in cooperation with heating boilers and heat pumps. Appendix application is the function of distributor, hydraulic separator, heating circuit from the boiler room.

An electric heater can be mounted to the tank.

Buffer dimensions 50 BR-005

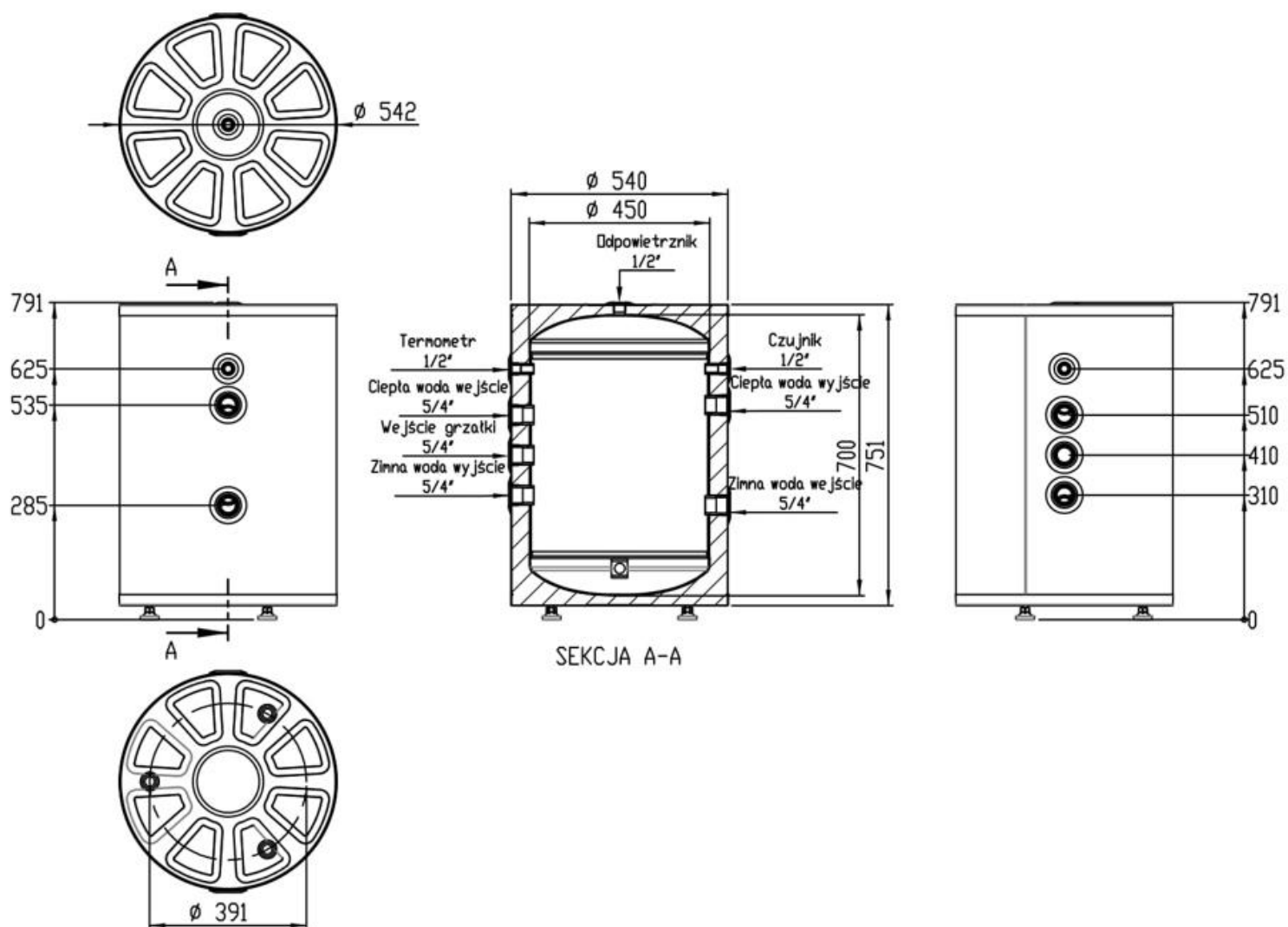


Construction buffer 100 BR-01

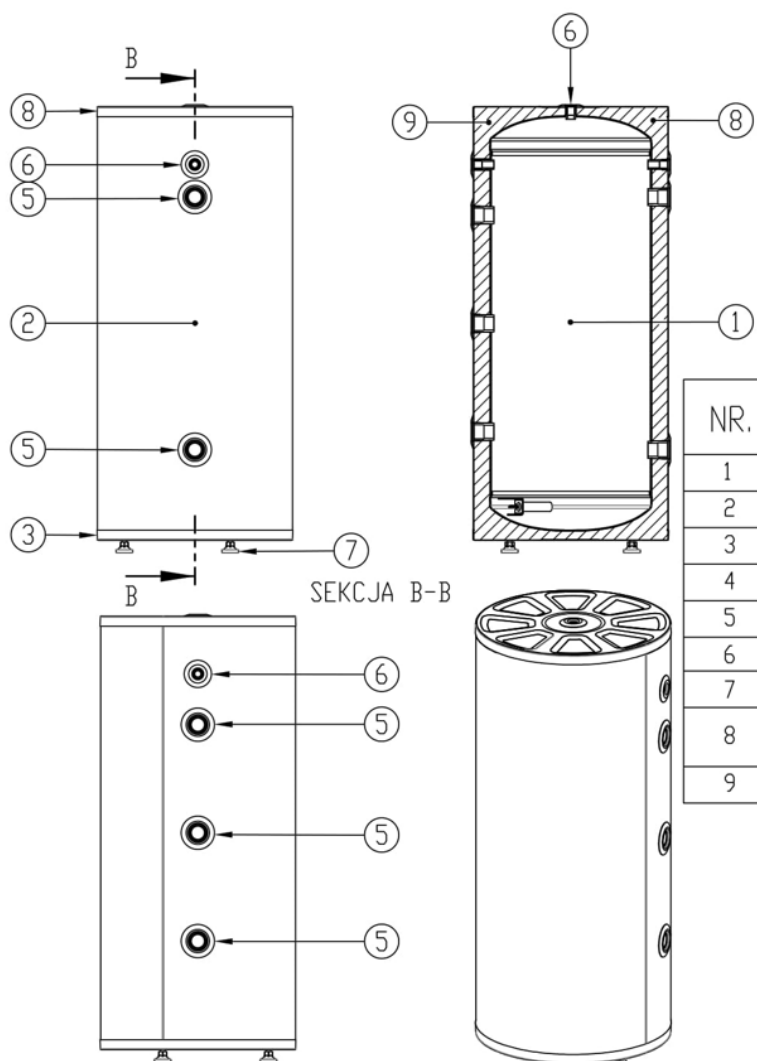


NR.	NAZWA CZĘŚCI	ILOŚĆ
1	Wnętrze Zbiornika, Bufor 100	1
2	Warstwa Zewnętrzna, Bufor 100	1
3	Dolna Pokrywa Zbiornika, Białe Malowanie	1
4	Górna Pokrywa zbiornika, Białe Malowanie	1
5	Uszczelka, Dla 5/4" Króćca, Czarna	5
6	Uszczelka Do Łącznika 1-2, Czerwona	3
7	Stopka Regulowana, 45mm Plastikowa, M12 Śruba	3
8	Materiał Izolacyjny 1200kg/zbiornik	1
9	Materiał Izolacyjny 1000kg/zbiornik	1

Buffer dimensions 100 BR-01

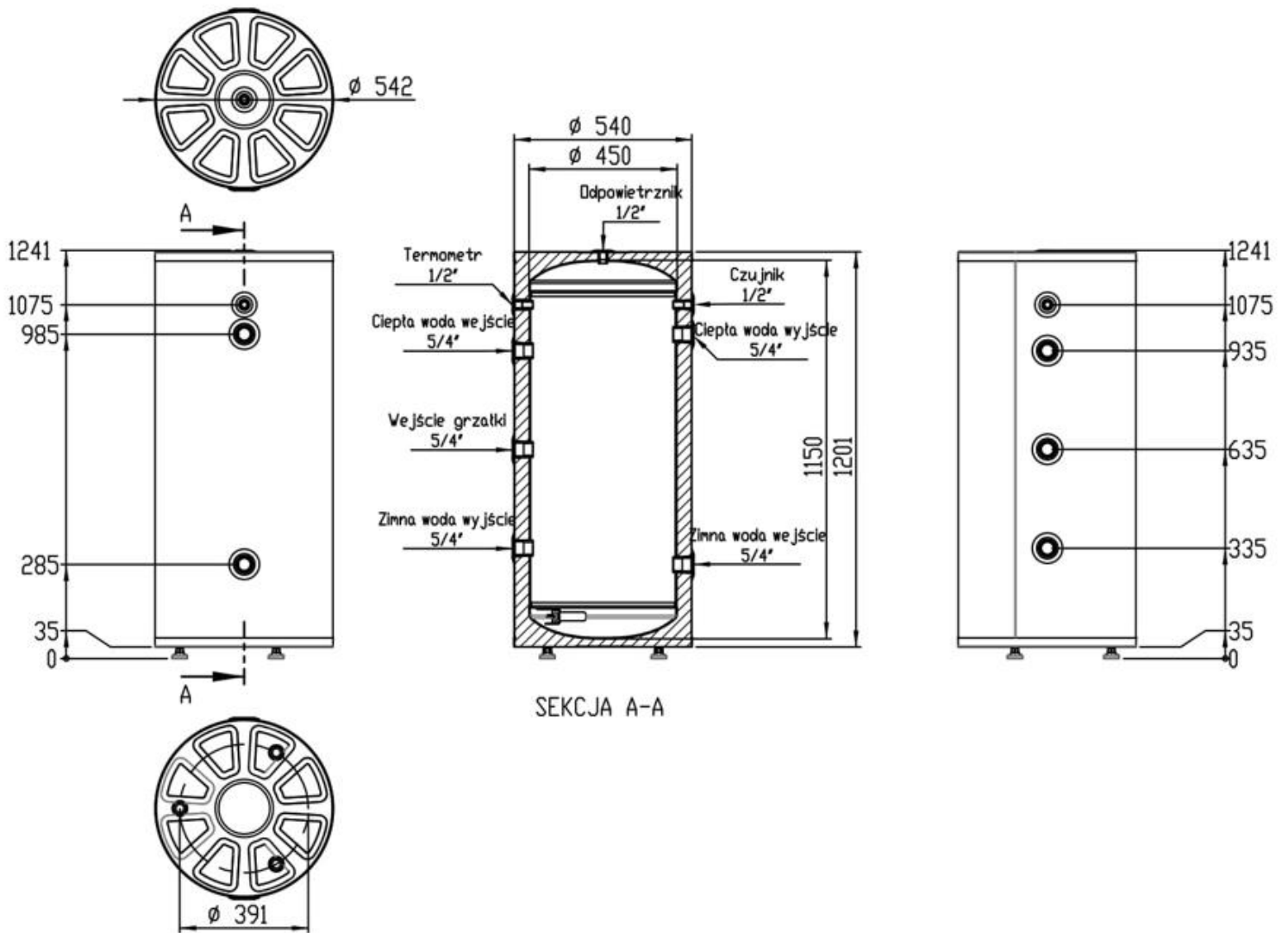


Buffer construction 200 BR-02

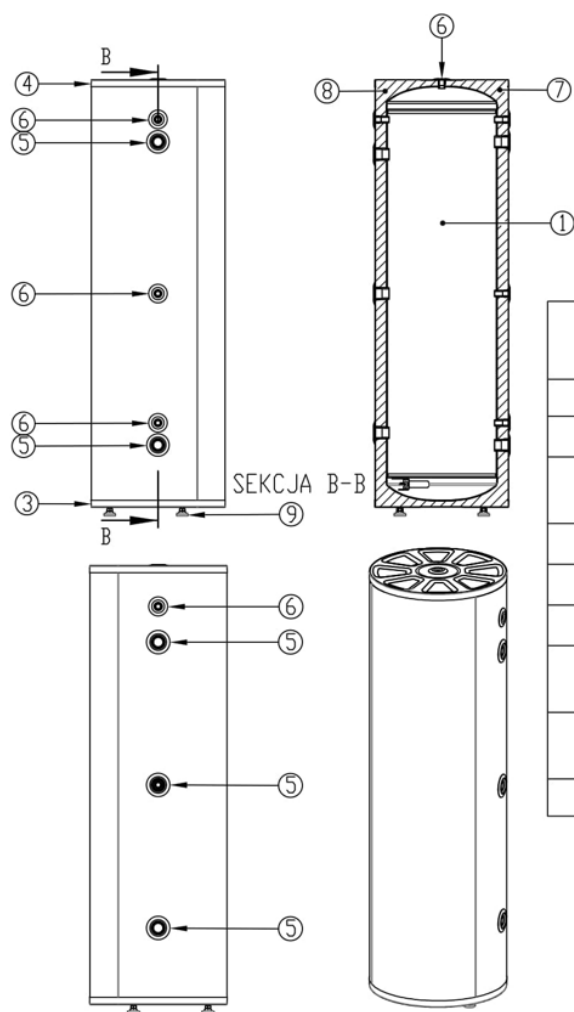


NR.	NAZWA CZĘŚCI	ILOŚĆ
1	Wnętrze Zbiornika, Bufor 200	1
2	Warstwa Zewnętrzna, Bufor 200	1
3	Dolna Pokrywa Zbiornika, Białe Malowanie	1
4	Górna Pokrywa Zbiornika, Białe Malowanie	1
5	Uszczelka, Dla 5/4" Króćca, Czarna	5
6	Uszczelka Do Łącznika 1-2, Czerwona	3
7	Stopka Regulowana, 45mm Plastikowa, M12 Śruba	3
8	Materiał Izolacyjny 1000kg/Zbiornik	1
9	Materiał Izolacyjny 1200kg/Zbiornik	1

Buffer dimensions 200 BR-02

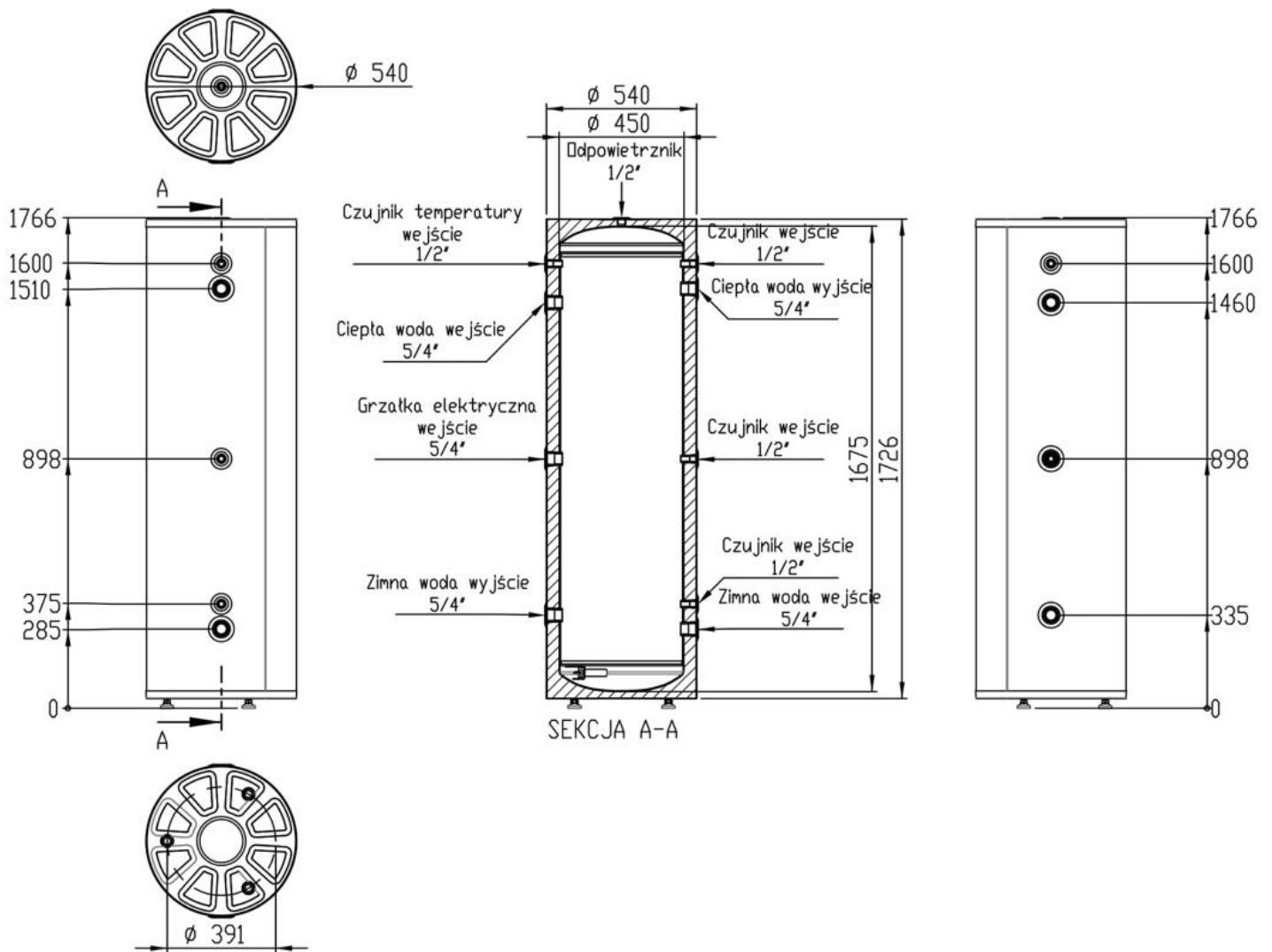


Construction of the BR-025 buffer

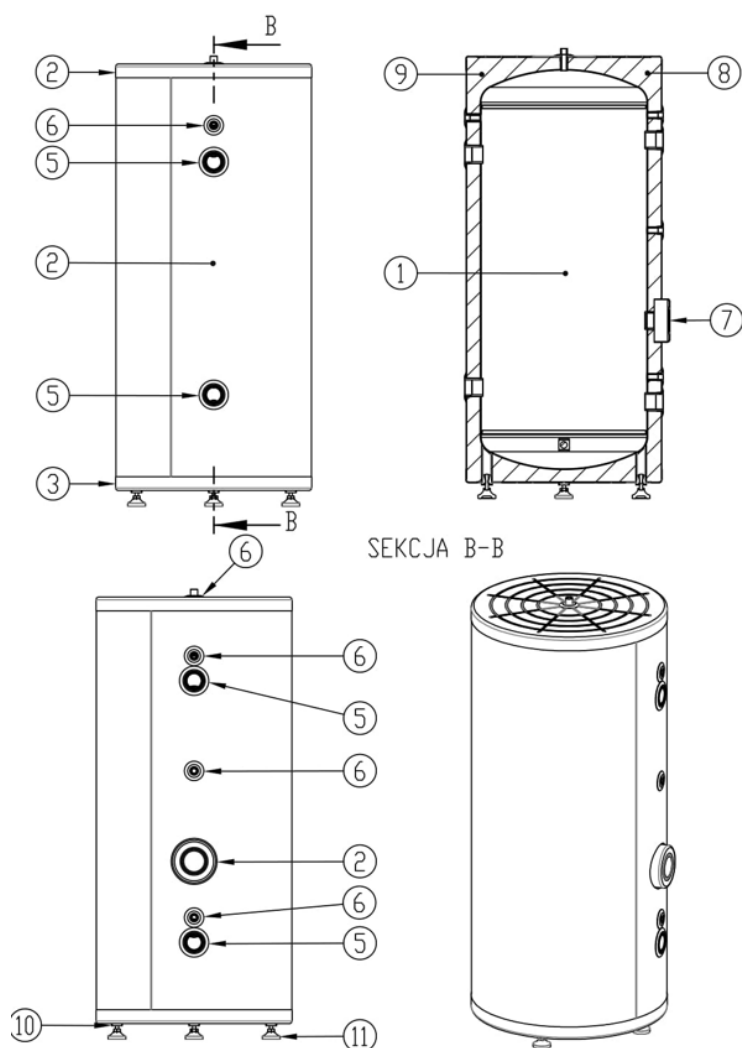


NR.	NAZWA CZĘŚCI	ILOŚĆ
1	Wnętrze Zbiornika, Bufor 250	1
2	Warstwa Zewnętrzna, Bufor 250	1
3	Dolna Pokrywa Zbiornika, Białe Malowanie	1
4	Górna Pokrywa Zbiornika, Białe Malowanie	1
5	Uszczelka, Dla 5/4" Króćca, Czarna	5
6	Uszczelka, Dla 1/2" Króćca, Czerwona	5
7	Materiał Izolacyjny 1200kg/Zbiornik	1
8	Materiał Izolacyjny 1000kg/Zbiornik	
9	Stopka Regulowana, 45mm Plastikowa,	

Buffer dimensions BR-025

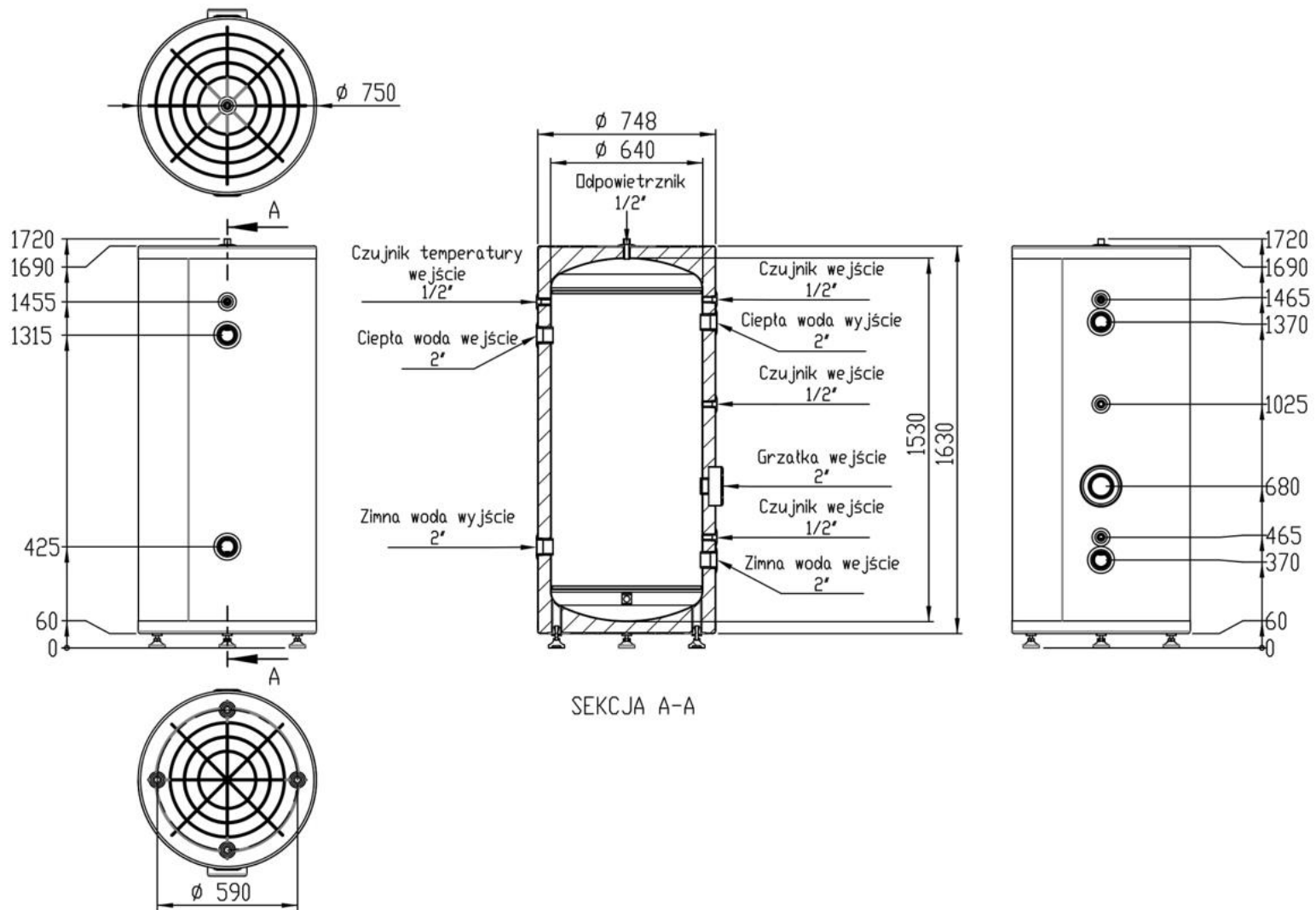


Construction of the BR-05 buffer



NR.	NAZWA CZĘŚCI	ILOŚĆ
1	Wnętrze Zbiornika, Bufor 500	1
2	Warstwa Zewnętrzna, Bufor 500	1
3	Dolna Pokrywa Zbiornika	1
4	Górna Pokrywa Zbiornika	1
5	Uszczelka, Dla 2" Króćca, Czarna	4
6	Uszczelka, Dla 1/2" Króćca, Czerwona	5
7	Uszczelka, Dla Króćca Grzałki	1
8	Materiał Izolacyjny 1200kg/Zbiornik	1
9	Materiał Izolacyjny 1000kg/Zbiornik	1
10	Profil Kwadratowy, 40 x 40mm, M12 Śruba	4
11	Stopka Regulowana, Plastikowa, M12 Śruba, 70mm	4

Buffer dimensions BR-05



CONNECT

The buffer tank should only be installed in a standing position.

The buffer tank can be installed in the central heating system:

- Open system, made in accordance with PB-B-02413:1991,
- Closed system, made in accordance with PB-B-02414:1999.

RUN

Before starting the buffer tank, it is necessary to visually check the correctness of the device connection.

Check the tightness of the connections.

Check the operation of the safety valve (according to the valve manufacturer's instructions).

TANK EMPTYING

In order to empty the tank of water, it is necessary to:

- close the valves connecting the exchanger to the heating circuit,
- close the valve on the cold water supply to the exchanger,
- Open the drain valve.

OPERATION

Tanks are safe and reliable provided that the following rules are observed:

- do not operate the tank without a working safety valve,
- the operation of the valve should be checked every 14 days by turning the cap so that there is a slight discharge of water,
- it is recommended to thermally insulate the discharge pipe and the coil connection pipes to reduce heat loss,
- Any irregularities in the operation of the device should be reported to the service facility.

These activities are at your own expense and are not subject to warranty.

TECHNICAL SPECIFICATIONS

Tank buforowy		BR-005	BR-01	BR-02	BR-025	BR-05
Rated capacity	l	50	100	170	245	454
Energy efficiency		A	A	B	B	B
Rated pressure	Mpa	0,4				
Rated temperature	°C	95				
Net weight	Kg	35	50	60	70	90

Abnormality	Instructions for use
Tank water leakage	turn off the cold water supply valve and the shut-off valves of the central heating system and contact the service
Excessive pressure increase in the tank	
Pressure increase in the central heating system	

RECYCLING AND DISPOSAL OF WASTE

Product and equipment disposal :

The product and equipment must not be disposed of with household waste. Care must be taken to ensure that the product and all equipment are disposed of correctly. All applicable laws must be observed.

DECOMMISSIONING

Used product cannot be treated as municipal waste. Proper disposal of the used product prevents potential negative effects on the environment that could occur in the event of improper waste management . For more detailed information on the recycling of this product, please contact your local government unit, waste management services.



PRODUCER

ENERGIA ON SP. Z O.O.

MIKOLAJA REJA 13/15/1101

81-874 SOPOT

WARME.COM.PL